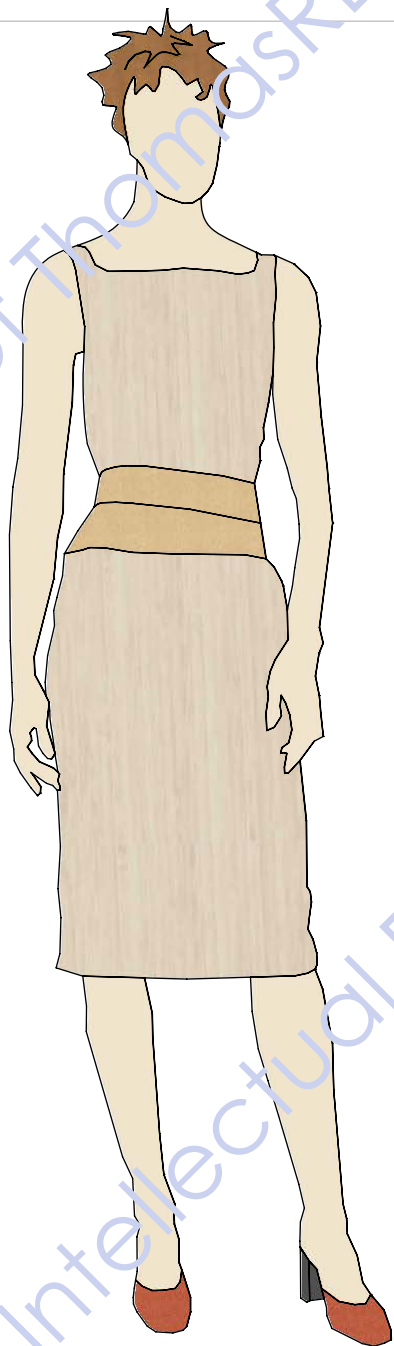
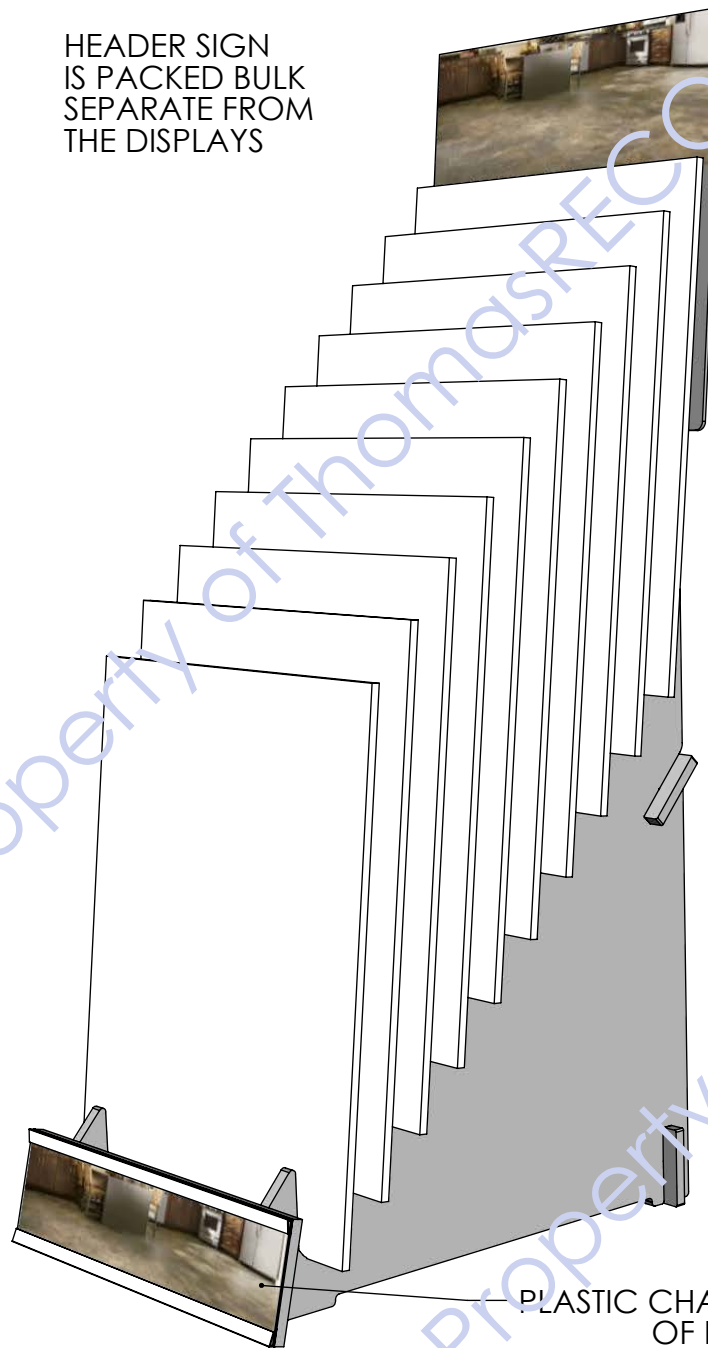


Back



HEADER SIGN
IS PACKED BULK
SEPARATE FROM
THE DISPLAYS



PLASTIC CHANNELS TOP & BOTTOM
OF FOOTER

SHOWING SAMPLES 22.5 X 30 X 1/2" THICK

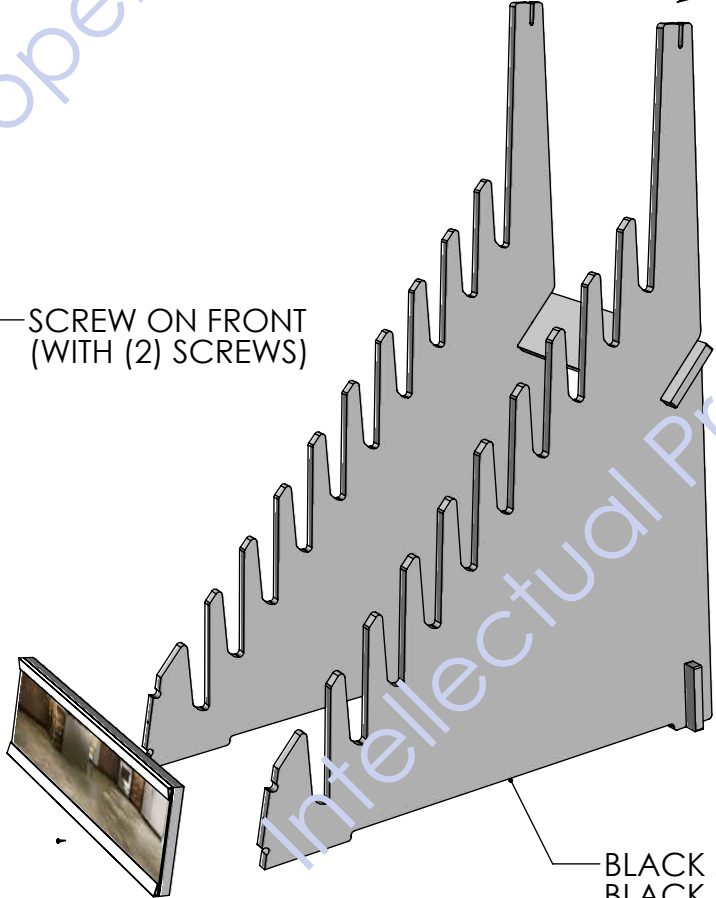
HEADER SIGN
IS PACKED BULK
SEPARATE FROM
THE DISPLAYS



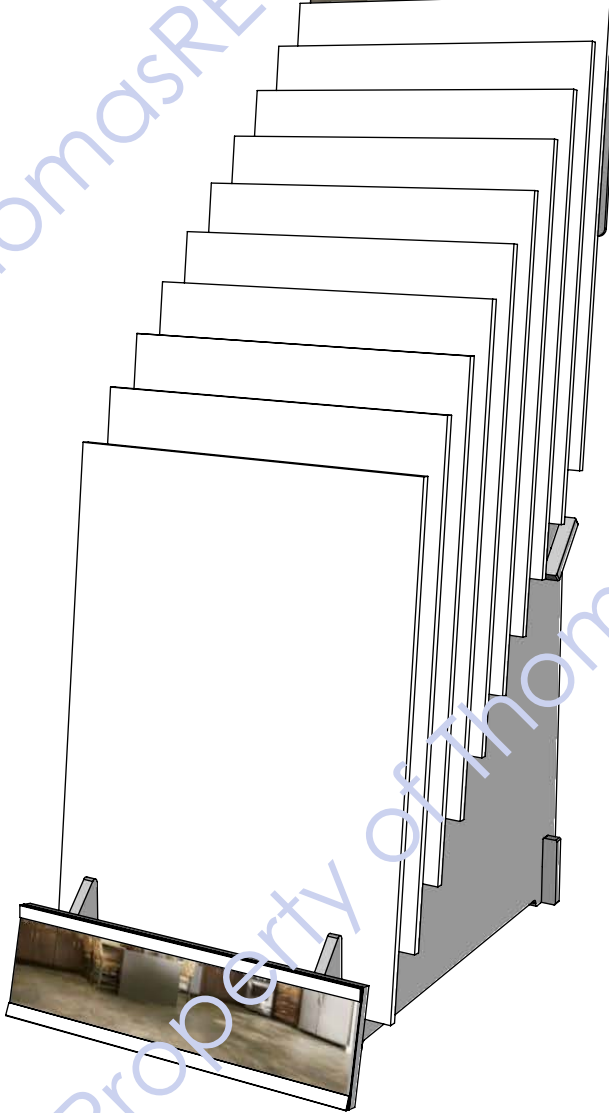
DROP IN HEADER



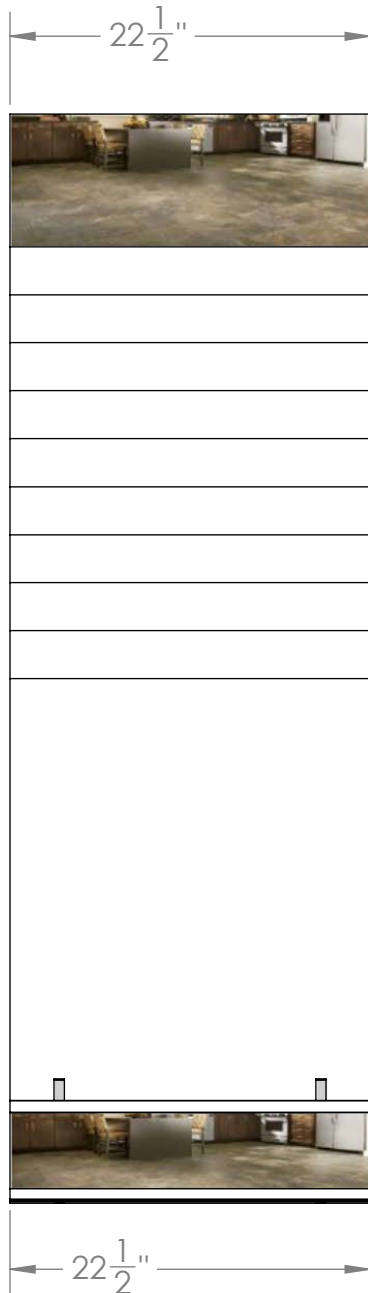
SCREW ON FRONT
(WITH (2) SCREWS)



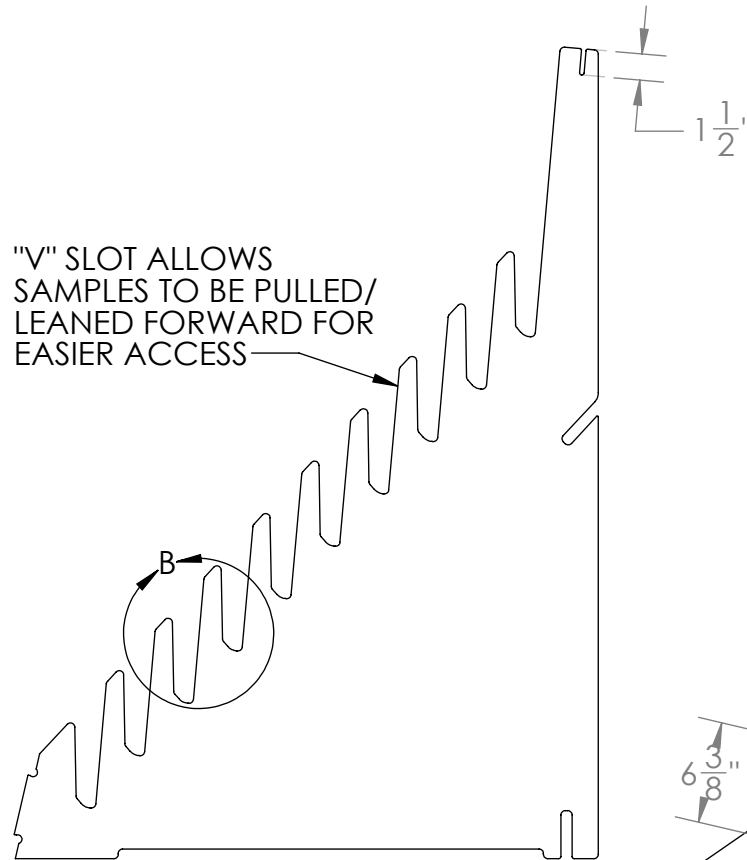
BLACK MDF, 5/8" THICK
BLACK PAINTED EDGES



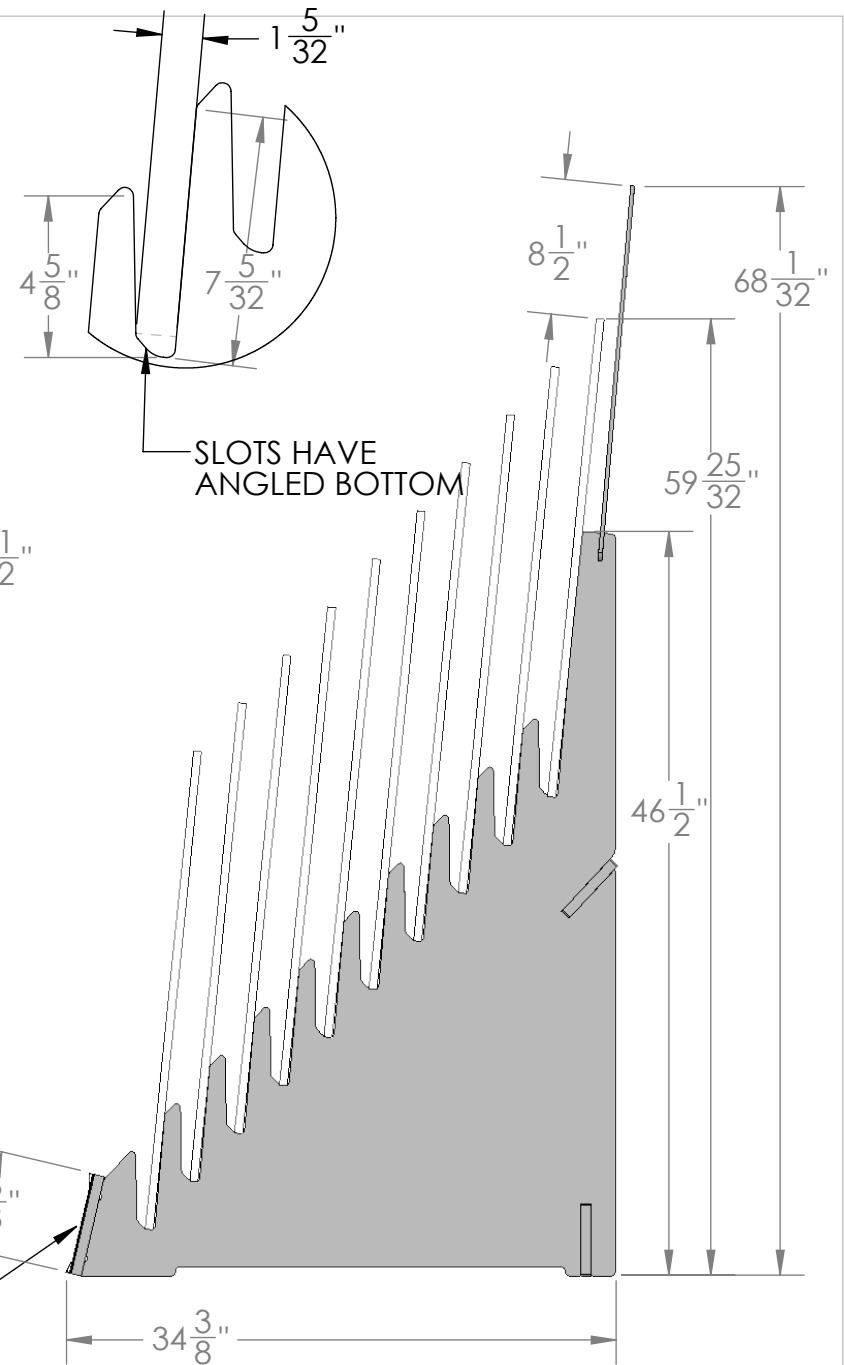
VIEWABLE GRAPHIC AREA 8.5" X 22.5" (IN-BETWEEN CHANNELS)



"V" SLOT ALLOWS
SAMPLES TO BE PULLED/
LEANED FORWARD FOR
EASIER ACCESS



ANGLED BACK
FOR BETTER
VIEWING

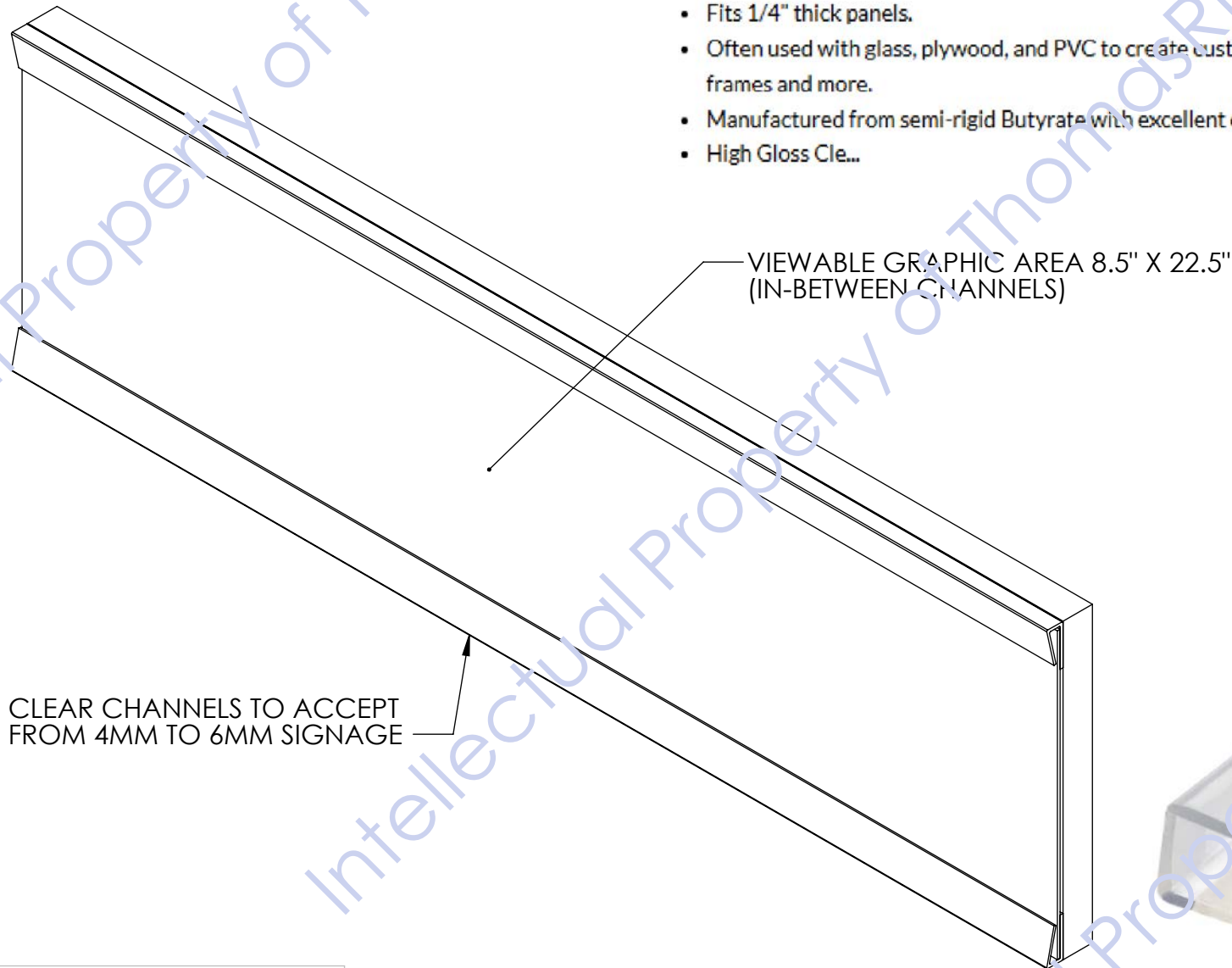


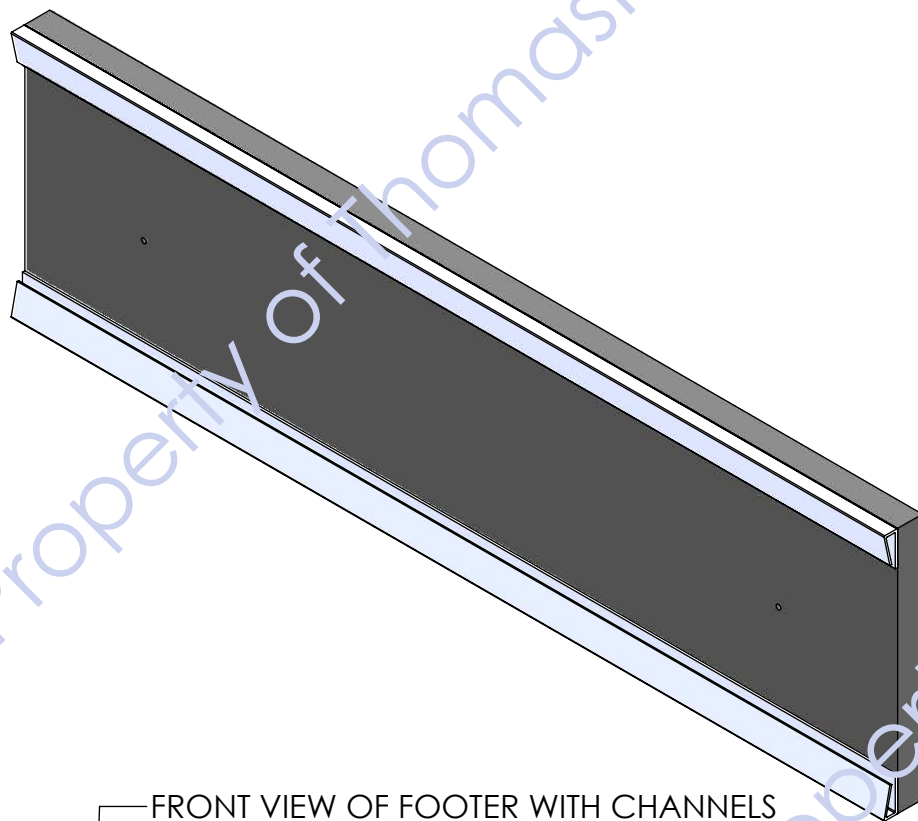
APPLY SIGN CHANNELS (THEY WOULD COME WITH FOAM ADHESIVE TAPE BACKING)

1/4in Clear Butyrate | Cap Moulding with Clear Adhesive | 12ft Length | Cut to (4) 36in Pieces

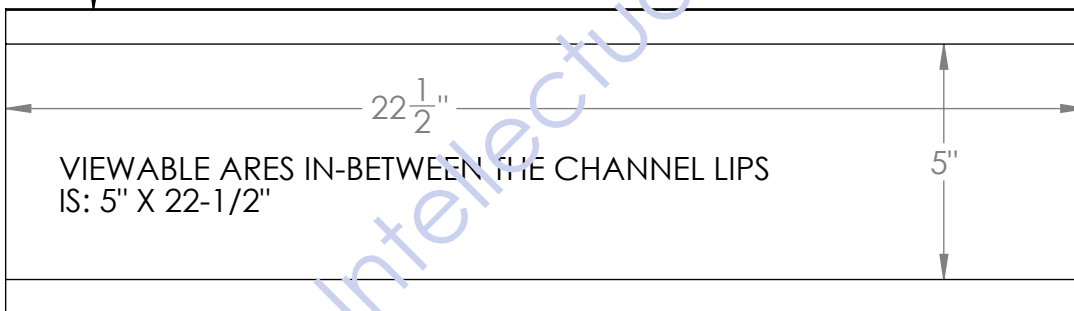
SKU: 2030-CL-CLA-36-4-PKIT

- Fits 1/4" thick panels.
- Often used with glass, plywood, and PVC to create custom edge to edge graphics, top loading frames and more.
- Manufactured from semi-rigid Butyrate with excellent clarity and a high gloss finish.
- High Gloss Cle...





FRONT VIEW OF FOOTER WITH CHANNELS
TO SHOW THE APPROXIMATE VIEWABLE
SPACE IN-BETWEEN THE CHANNELS



SIGN INSERT (BY U.M.)

